



InPrint - The all-in-one system for web inspection

Fife InPrint is a system simple to integrate in any printing press. Thanks to its characteristics the Fife InPrint is ideal for all web viewing applications.

The integration of camera, control panel and CPU in a compact housing is a unique feature only offered by this system. The minimized number of cables and connections, the elimination of any additional external components or image processing devices and its outstanding technical characteristics put the Fife InPrint ahead of any traditional video web inspection system in terms of performance and reliability.

The high performance imager used delivers a picture with an optimized resolution of 800x600 pixels at a refresh rate of 72Hz, with the direct image transfer from the camera to the monitor ensuring an unmatched sharpness.

The Fife InPrint is ideal for an early detection of the smallest variations in the print or register settings, allowing a prompt correction, much before they become visible to the human eye on the final product. An increase of productivity and product quality is therefore guaranteed.



FEATURES

SPECS

General Specifications

Power Supply

115V/230V, 47 ... 63Hz

Ambient Temperature

+5°C ... +45°C

Traverse

Manual or programmable max. length of the traverse: 4,000mm (cantilevered traverse max. length: 1,000mm)

Strobe lamp

Long life Xenon lamp

Monitor

17" CRT Monitor (Flat Monitors available as option)

Camera

High resolution RGB-Imager with full 30bit colour resolution and processing. Up to 8 frames per second. SVGA output signal with 800x600 pixels resolution at a refresh frequency of 72Hz.

Motorized Lens with Iris, Focus and Zoom motorized controls. 24 x zoom (optical and digital).

Standard field of view

Max. 84x112mm

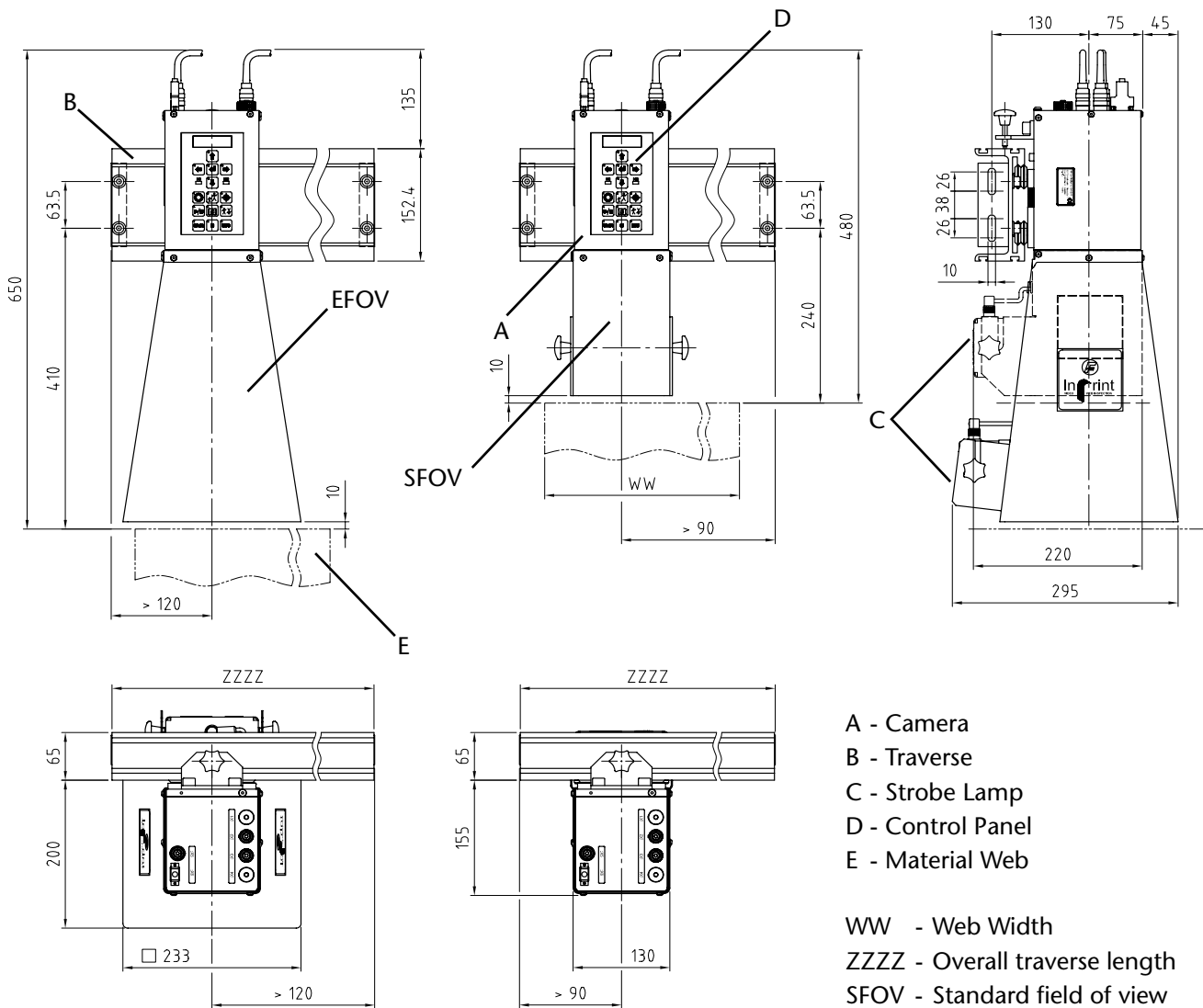
Min. 3,5x4,6mm

Extended field of view (Option)

Max. 162x216mm

Min. 6,75x9mm

Fife InPrint with Manual Traverse



- A - Camera
- B - Traverse
- C - Strobe Lamp
- D - Control Panel
- E - Material Web

- WW - Web Width
- ZZZZ - Overall traverse length
- SFOV - Standard field of view
- ZZZZ > WW + 180
- EFOV - Extended field of view
- ZZZZ > WW + 240

InPrint - Functions and Installation

Full set of functions

Split screen function, Autoscroll function, image rotation ($\pm 90^\circ$ and 180°) and image mirroring function, lens with motorized controls for Iris, Focus and Zoom (with an outstanding up to 75 times enlargement on a 17" monitor), Xenon flash lamp for highest colour fidelity, are standard for all Fife InPrint versions. A programmable track with memory for up to

2x32 positions and extended field of view are available as options.

Last but not least, for all versions of the Fife InPrint video inspection system, the all-in-one design guarantees an excellent price-performance ratio.

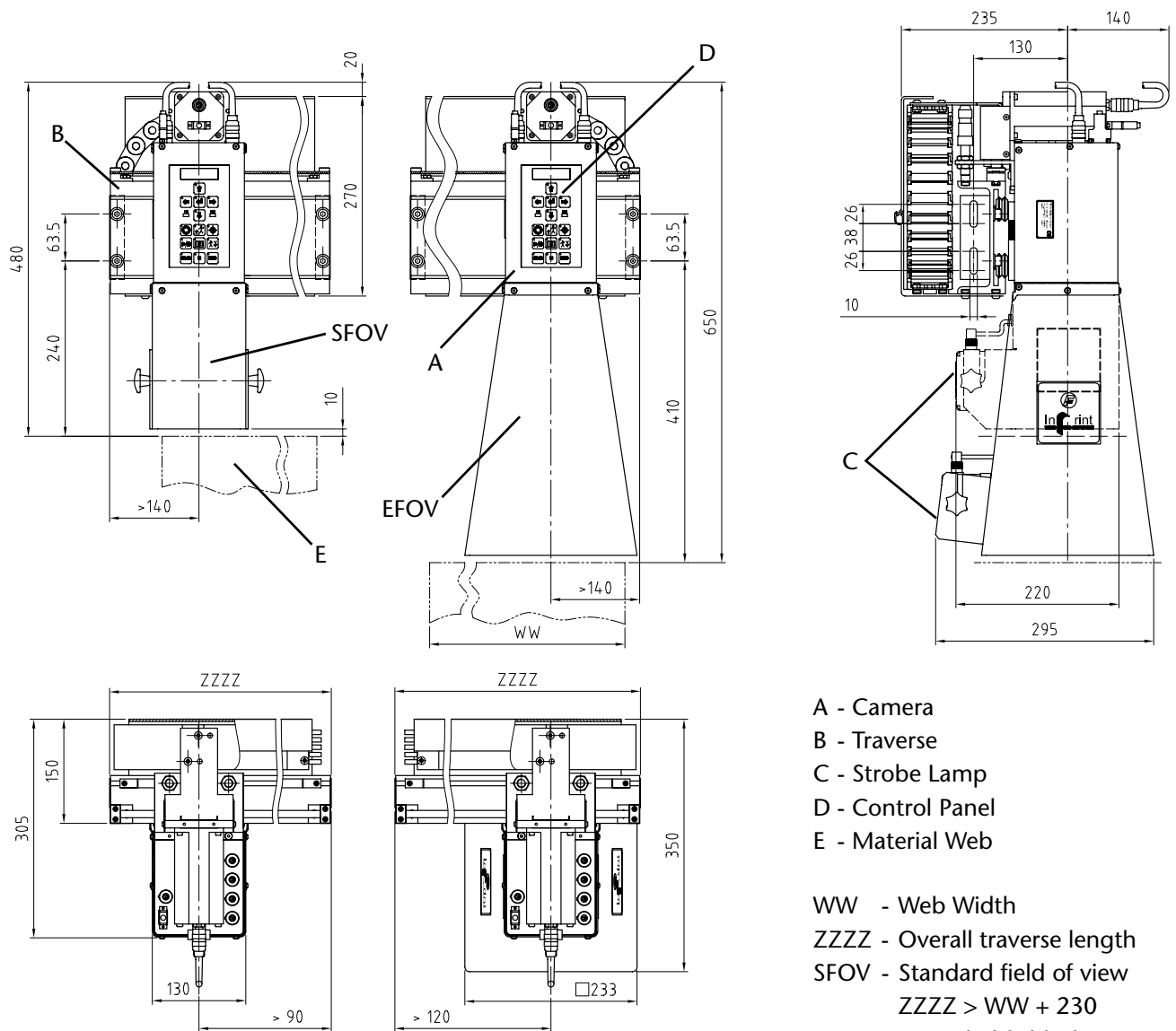
Easy to install

Install the Fife InPrint traverse on the printing machine, connect the synchronization sensor, the power

supply and the monitor. The Fife InPrint video inspection system is immediately ready to run.

The synchronization sensor is available as gear tooth sensor (standard), print mark reading sensor or rotary encoder. Virtual encoder signals typically supplied by gearless printing presses can be directly connected according to the signal standards 12 ... 24V, Open collector or RS-422.

Fife InPrint with Programmable Traverse



- A - Camera
- B - Traverse
- C - Strobe Lamp
- D - Control Panel
- E - Material Web

WW - Web Width

ZZZZ - Overall traverse length

SFOV - Standard field of view

$ZZZZ > WW + 230$

EFOV - Extended field of view

$ZZZZ > WW + 260$

InPrint - Standard and Optional Features

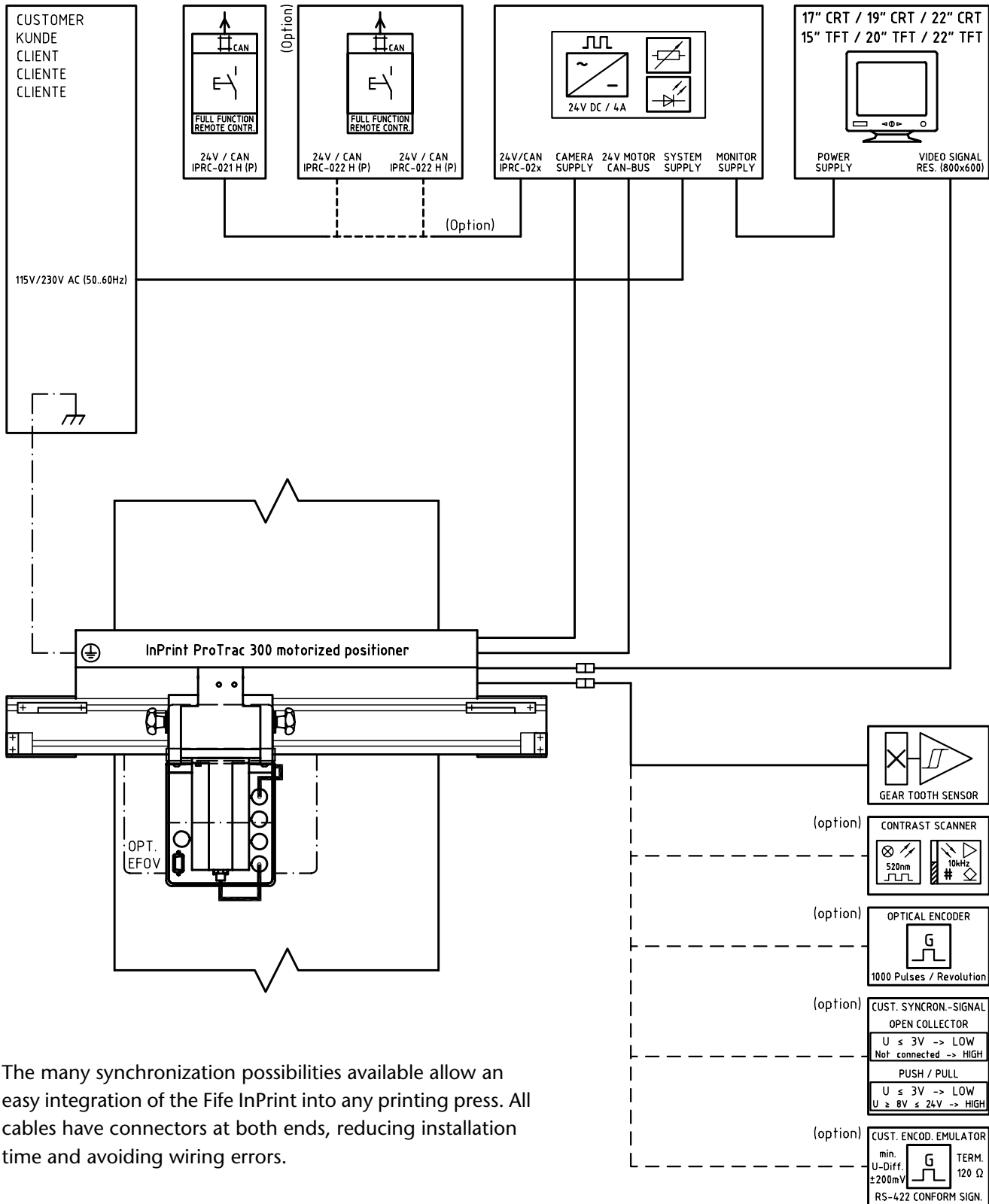
Standard Features

- **Splitscreen** – Visual comparison of current picture against a reference
- **Auto Scroll** – Continuous scanning of the whole repeat length and/or width
- **Image Freeze** – permanently shows the last picture
- **Image Rotation** 90°, 180° and 270°
- **Image Mirroring**
- **Password** – For protection of setup parameters
- **Programmable track** memory for saving up to 2x32 positions (including digital zoom setting)
- **External remote control panel** Available as handheld or panel-mount unit

Optional Features

- **Back strobe** – Fixed or movable on a traverse
- **Extended Field of View (EFOV)**

InPrint - Components and Connections



The many synchronization possibilities available allow an easy integration of the Fife InPrint into any printing press. All cables have connectors at both ends, reducing installation time and avoiding wiring errors.

Fife-Tidland GmbH

Fifestraße 1, 65779 Kelkheim, Deutschland
 Siemensstraße 13-15, 48683 Ahaus, Deutschland
 Phone: +49-6195-7002-0
 Fax: +49-6195-7002-933
 E-Mail: info@maxcess.eu
 Web: www.maxcess.eu

Fife-Tidland Ltd.

Millennium House - Progress Way
 Denton/Manchester M34 2GP Great Britain
 Phone: +44-161-320-2000
 Fax: +44-161-320-4513
 E-Mail: sales_uk@maxcess.eu
 Web: www.maxcess.eu

Fife Corporation

222 West Memorial Road
 Oklahoma City, OK 73114, USA
 Phone: +1-405-755-1600
 Fax: +1-405-755-8425
 E-Mail: fife@fife.com
 Web: www.fife.com



MAXCESS INTERNATIONAL COMPANIES



GUIDING · INSPECTION



TENSION CONTROL



SLITTING · WINDING