



FIFE MICROSYPMAT

FIFE MICROSYPMAT

Offset Pivot Guide

Fife's MicroSypmat (μ Sypmat) single-roll Offset Pivot Guide (OPG) is a miniature electro-mechanical system for accurate guiding of narrow webs under tight space constraints.

The MicroSypmat can operate in edge, center or line guiding applications depending on your needs and sensor(s) selected.

Featuring a unique all-in-the-roller design with precision machined parts, the MicroSypmat offers accurate guiding within minimum space, reducing downtime and waste of material.

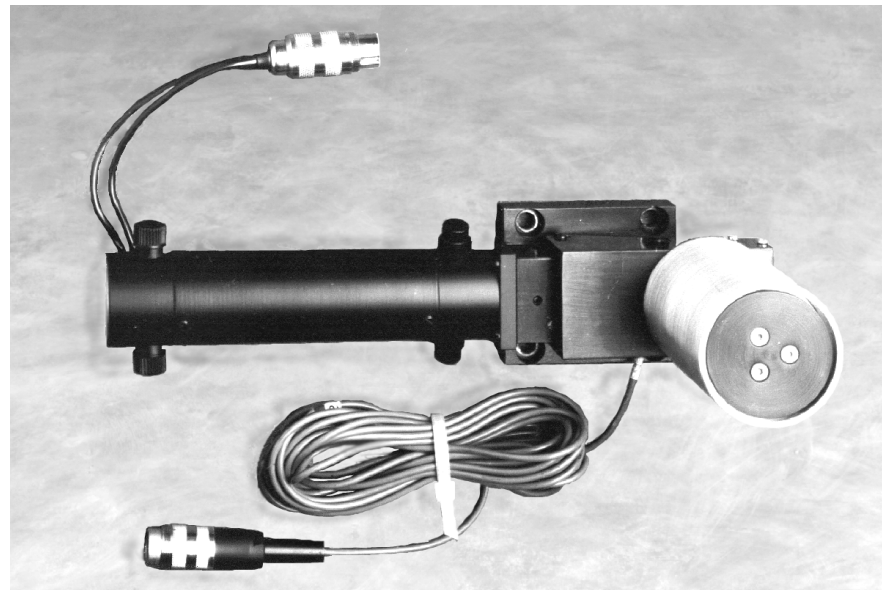
Features such as a ball screw actuator and speed feedback provide low friction efficient operation. The actuator is sealed for very low maintenance and long life.

APPLICATIONS

Compact, Durable, Versatile

The MicroSypmat can guide very narrow web materials with excellent accuracy thanks to the wide range of Fife sensors available. The integrated Servocenter transducer provides automatic guide centering, which speeds the setup and threading process.

The cantilevered mounting makes web insertion very quick and easy.



MicroSypmats are available with 2 standard roller faces:

- 80mm and 100mm, with diameters of 50mm, 75mm, 100mm.
- Maximum allowed tension is 100N.

The complete range of Fife processors and sensors can be used with the MicroSypmat, including:

- CDP-01 or DP-20 Digital Processors
- Line guide sensors for continuous or broken lines or edges of lines
- Ultrasonic sensors for transparent materials
- Infrared Sensors for a variety of applications

INSTALLATION

Thanks to its compact dimensions the MicroSypmat can

be easily located immediately upstream of the point where web positioning accuracy is required.

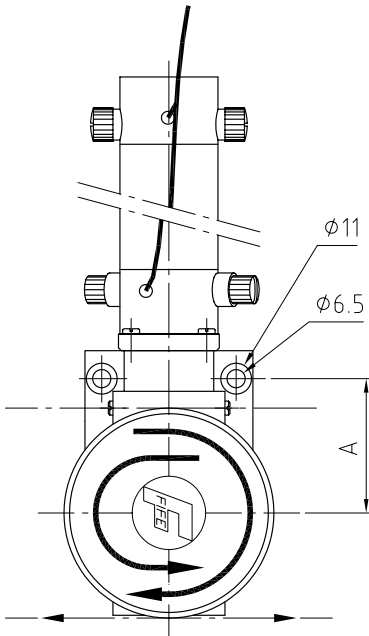
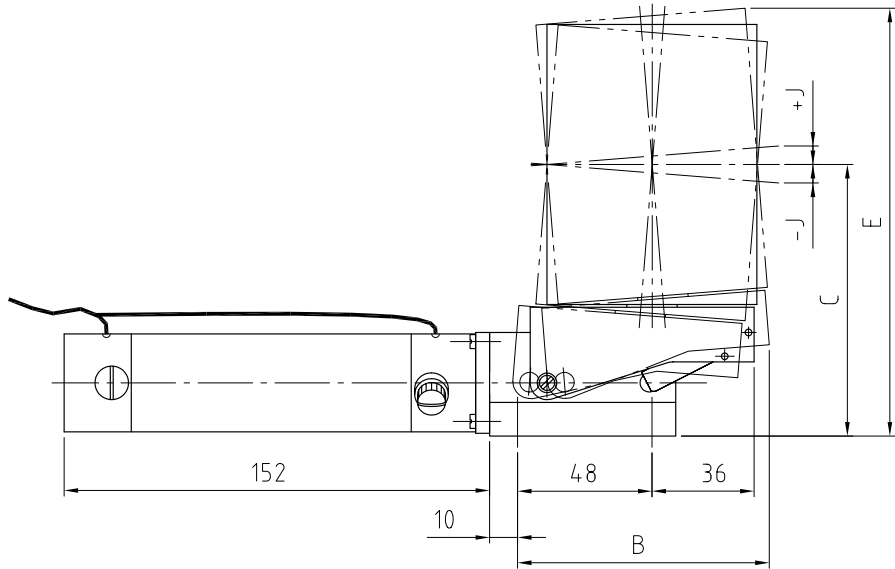
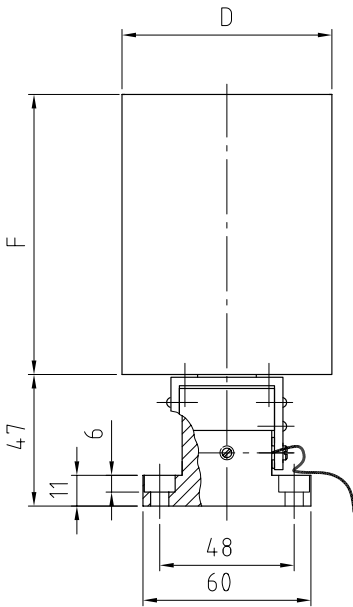
Standard square bar sensor mounting is available for all sensors.

The cantilevered mounting of the MicroSypmat does not require any special mounting bracket or stand, making it easy to install on existing machinery, where its compact size avoids the need of expensive modifications.

FEATURES

- Compact size
- Cantilevered mounting
- High dynamic response
- Backlash free actuator
- Integrated servocenter transducer

SPECIFICATIONS FIFE MICROSYMAT



V_{corr} = Correction Velocity

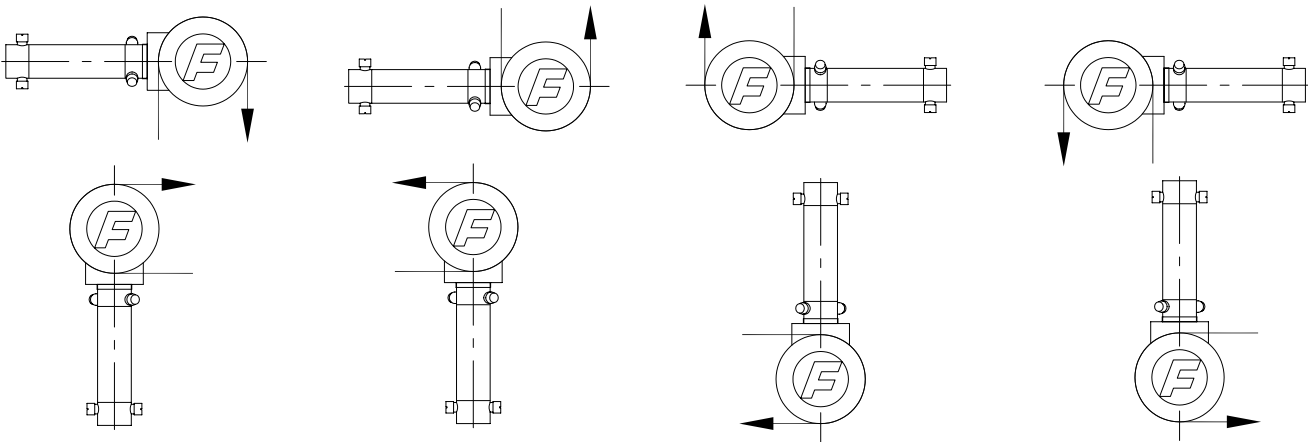
Weight = 1,25 kg

T_{max} = 100 N



D mm	F mm	J mm	A mm	B mm	C mm	E mm	V_{corr} mm/sek
50	80	4	35,5	90	87	131	39
	100	4	35,5	90	97	151	24
75	80	6	48	90	87	133	60
	100	6	48	90	97	153	52
100	80	8	60,5	115	87	135	79
	100	8	60,5	115	97	155	69

INSTALLATION VARIANTS



Fife-Tidland GmbH

Fifestraße 1
65779 Kelkheim, Deutschland
Siemensstraße 13-15
48683 Ahaus, Deutschland
Phone: +49-6195-7002-0
Fax: +49-6195-7002-933
E-Mail: info@maxcess.de
http://www.maxcess.de

Fife-Tidland (UK) Ltd.

70-72 Manchester Road
Denton/Manchester M34 3PR
Great Britain
Phone: +44-161-320-2000
Fax: +44-161-320-4513
E-Mail: sales_uk@maxcess.de
http://www.maxcess.de

Fife Corporation

Post Office Box 26508
Oklahoma City, OK 73126, USA
Phone: +1-405-755-1600
Toll-Free: +1-800-639-3433
Fax: +1-405-755-8425
E-Mail: fife@fife.com
http://www.fife.com

COMPANIES OF **MAXCESS**
INTERNATIONAL



MAGPOWR