



## FIFE SYMAT 25

### FIFE SYMAT 25

#### Offset Pivot Guide

Fife's Symat 25 Offset Pivot Guide (OPG) is a compact electro-mechanical system for accurate guiding of narrow webs under tight space constraints. The Symat 25 can operate in edge, center or line guiding applications depending on your needs and sensor(s) selected.

The Symat 25 design features a unique backlash-free pivoting system that offers accurate guiding within minimum space, reducing downtime and waste of material.

Features such as a ball screw actuator and speed feedback provide low friction efficient operation. The actuator is sealed for very low maintenance and long life

### APPLICATIONS

#### Compact, Durable, Versatile

The Symat 25 Offset Pivot Guide can guide very narrow web materials with excellent accuracy thanks to the wide range of Fife sensors available. The integrated Servocenter transducer provides automatic guide centering, which speeds the setup and threading process.

Guiding rollers can be supplied with cantilevered mounting, making web threading very quick and easy.



Symat 25 Offset Pivot Guides are available with standard roller faces of 160mm, 200mm and 250mm, with diameters of 50mm. Special roller face lengths are possible. Guide span can range from 160mm to 300mm. Maximum allowed tension ranges from 150N to 200N, depending on the web threading style.

The complete range of Fife processors and sensors can be used with the Symat 25, including:

- CDP-01 or DP-20 Digital Processors
- Line guide sensors for continuous or broken lines or edges of lines
- Ultrasonic sensors for transparent materials
- Infrared Sensors for a variety of applications

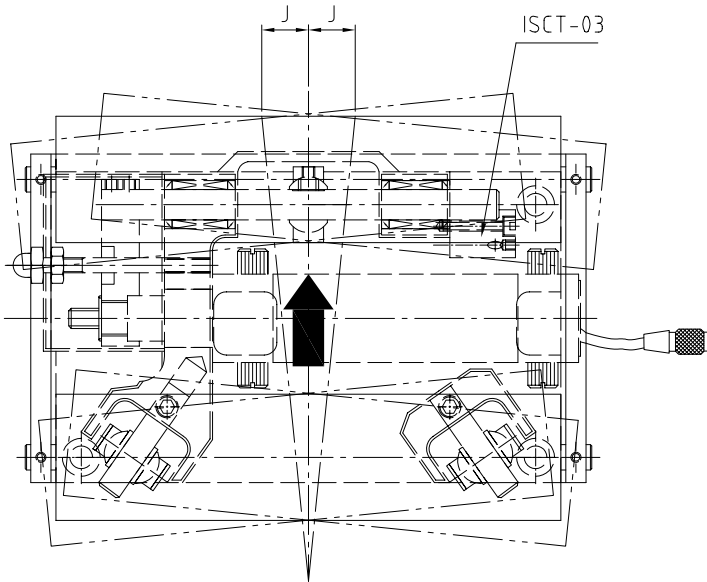
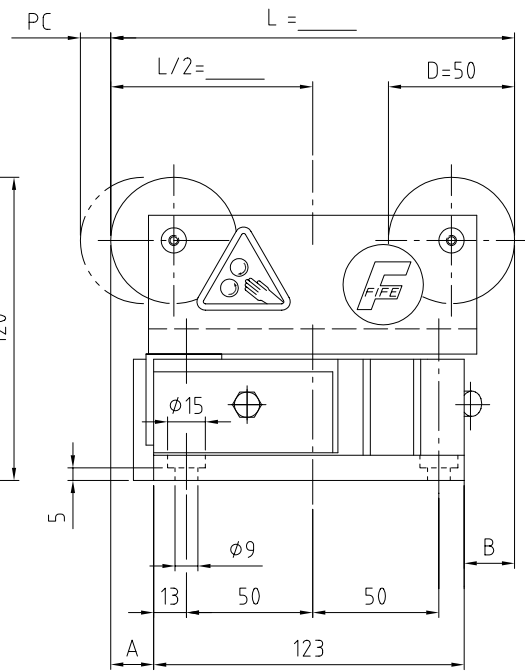
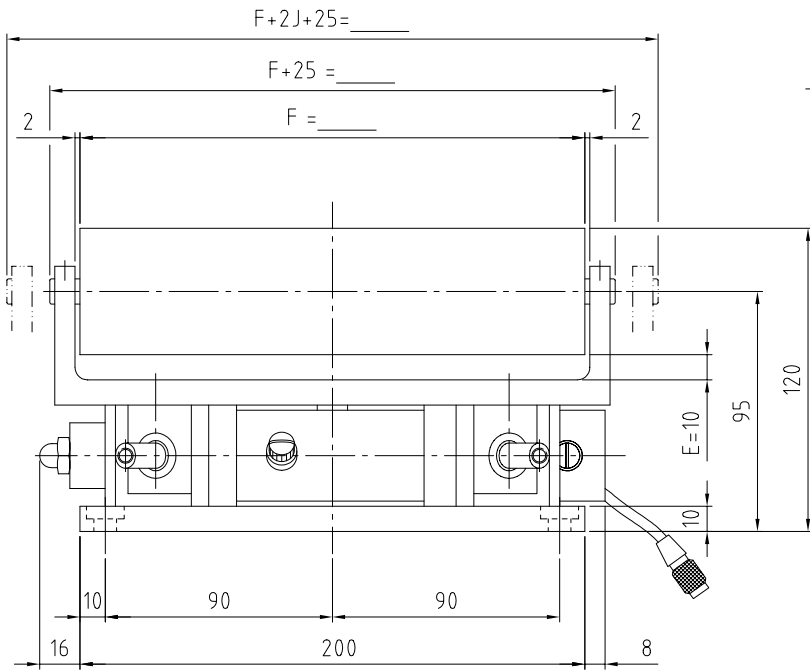
### INSTALLATION

Thanks to its compact dimensions the Symat 25 Offset Pivot Guide can be easily located immediately upstream of the point where web positioning accuracy is required. Standard square bar sensor mounting is available for all sensors. The compact dimensions of the Symat 25 Offset Pivot Guide make it easy to install it on existing machinery, where its compact size avoids the need of expensive modifications.

### FEATURES

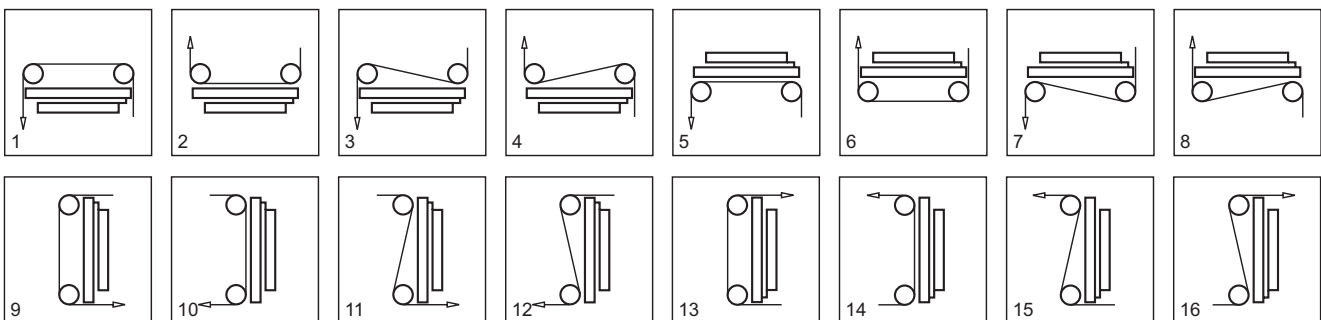
- Compact size
- High dynamic response
- Backlash free actuator
- Integrated servocenter transducer

# SPECIFICATIONS FIFE SYMAT 25



<b>F</b> = Roller Face	160 - 320mm
<b>D</b> = Roller Diameter	50 mm
<b>L</b> = Guide Span	160 - 300mm
<b>J</b> = Correction	0,05L + 10
<b>T</b> = Max. Web Tension	200N
with S-Wrap Style	150N
<b>V</b> = Max. Correction Speed	J x 3 (mm/s)
Weight	5kg

## INSTALLATION VARIANTS



**Fife-Tidland GmbH**  
 Fifestraße 1  
 65779 Kelkheim, Deutschland  
 Siemensstraße 13-15  
 48683 Ahaus, Deutschland  
 Phone: +49-6195-7002-0  
 Fax: +49-6195-7002-933  
 E-Mail: info@maxcess.de  
<http://www.maxcess.de>

**Fife-Tidland (UK) Ltd.**  
 Millenium House  
 Progress Way  
 Denton/Manchester M34 2GP  
 Great Britain  
 Phone: +44-161-320-2000  
 Fax: +44-161-320-4513  
 E-Mail: sales\_uk@maxcess.de  
<http://www.maxcess.de>

**Fife Corporation**  
 Post Office Box 26508  
 Oklahoma City, OK 73126, USA  
 Phone: +1-405-755-1600  
 Toll-Free: +1-800-639-3433  
 Fax: +1-405-755-8425  
 E-Mail: fife@fife.com  
<http://www.fife.com>

COMPANIES OF **MAXCESS**  
 INTERNATIONAL

