



FIFE SYMAT 70B

FIFE SYMAT 70B – ELECTROMECHANICAL WEB GUIDE

The Fife Symat 70B is a compact web guiding system, that allows for correction of the web position with minimal entry and exit spans.

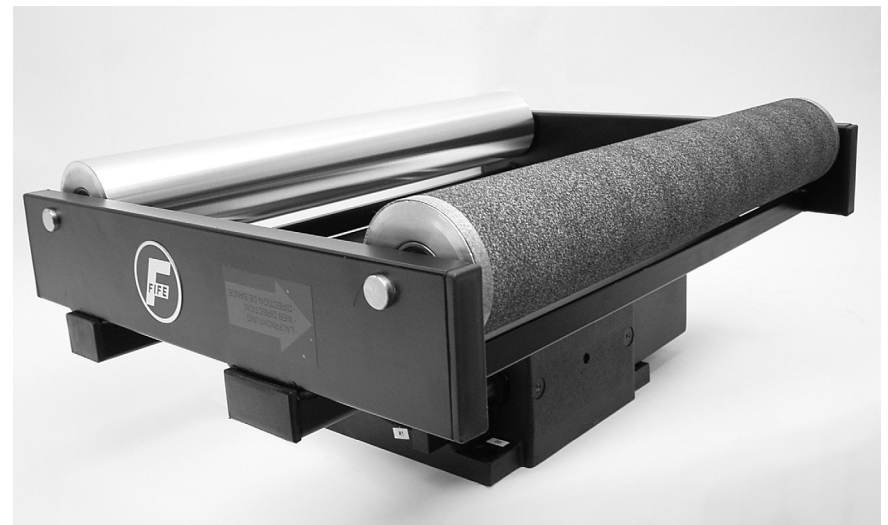
Main Features

Thanks to its modular design, the Fife Symat 70B can be easily configured to meet the requirements of your application. The Fife Symat 70B can be adapted to a very wide range of applications using different roller lengths, diameters and distances as well as different Fife components.

Sensor assembly poles, support rollers and sensor positioning equipment can be delivered fully assembled with the system or retrofitted at a later time for all installation options.

How the SYMAT 70B works

After the Fife Symat 70B has been installed, the rollers of the offset pivot guide should be aligned parallel to the rollers of the customer system. During



operation, the sensor installed in the exit span monitors the web position. If the web leaves the required position, an error signal is generated and recorded by a signal amplifier. This then activates a linear actuator that moves the offset pivot guide and thus corrects the web position. Rotational motion takes place around an axis that is located vertically to the base frame on the outer edge of the entry roller.

Accessories

An optionally available servo-center transducer makes it possible to center the offset pivot guide

quickly. While the system is placed in service, when the width of the web is being changed, or when splicing or threading the web, the rollers of the offset pivot guide can thus be aligned parallel to the rollers of the customer system. An additionally available stroke alarm makes it possible to record specific positions of the offset pivot guide, such as the positional limit.

Expansions and adaptations are possible with Installation beams, Remote control units, Oscillators, Sensor positioning equipment and Edge, center and line sensors.

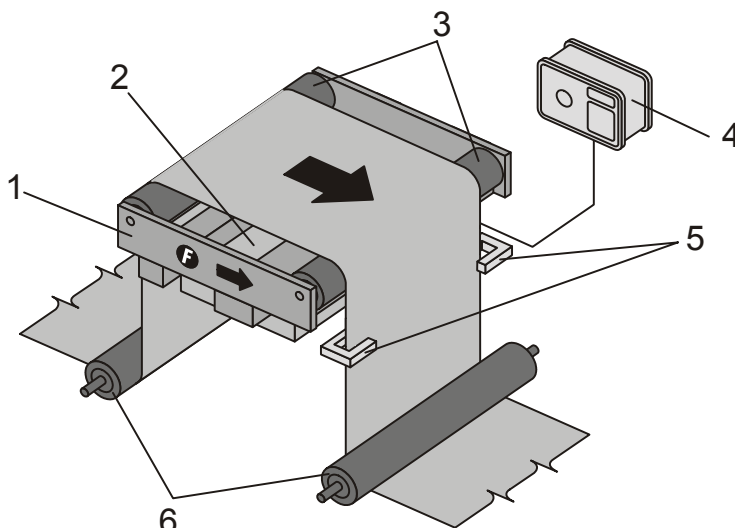
Components

The Fife Symat 70B consists of the following components:

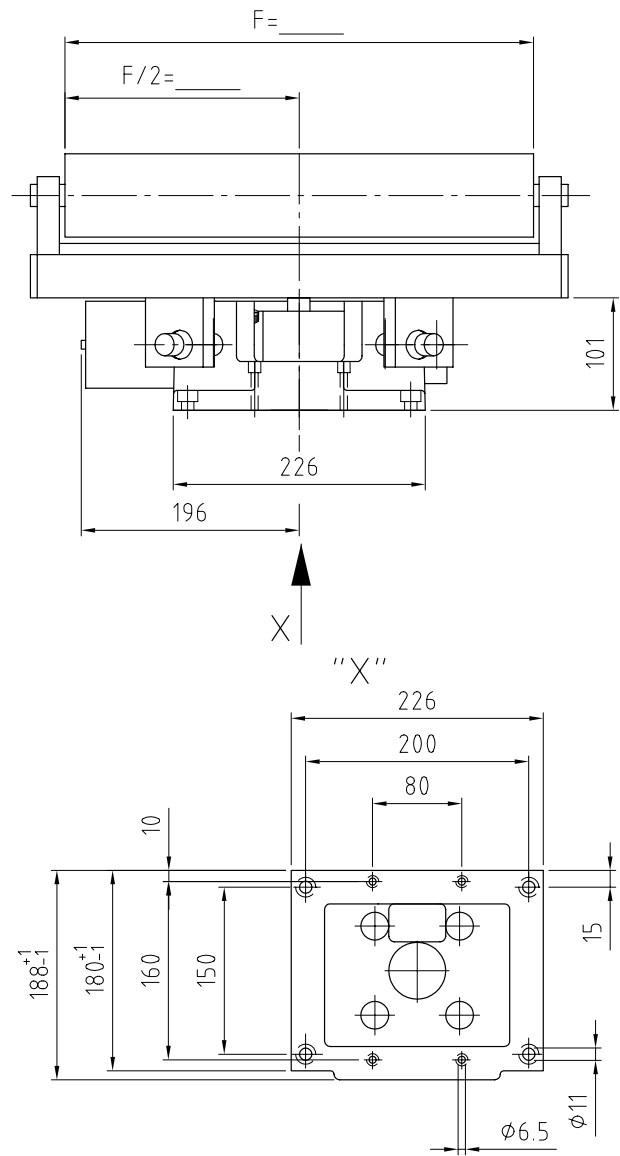
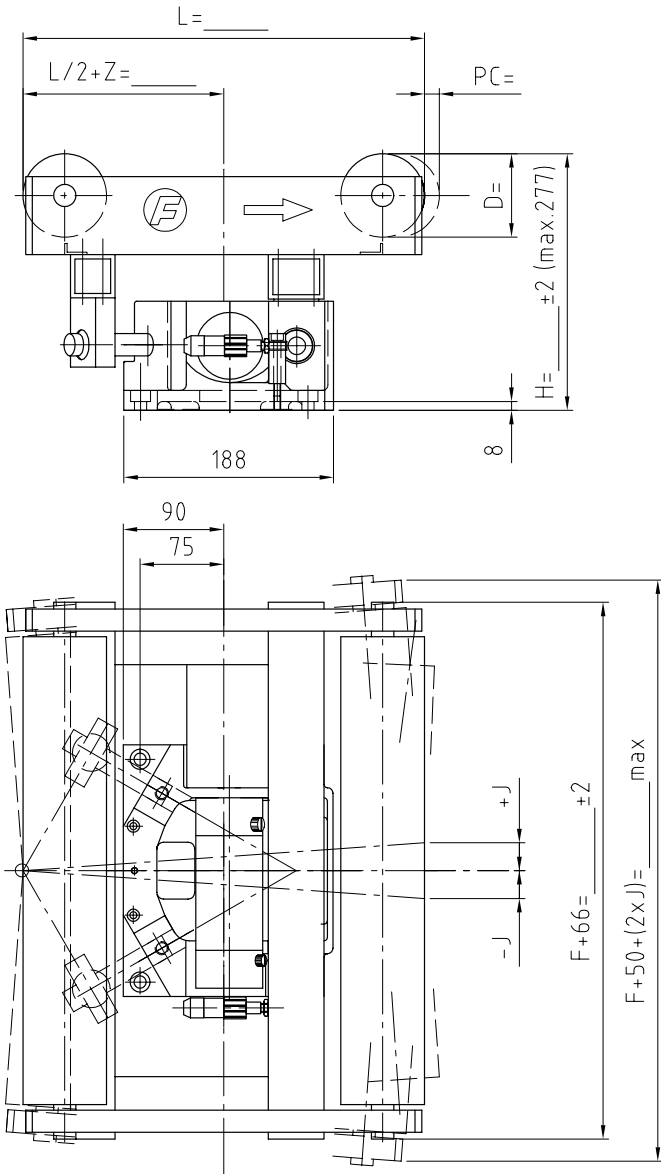
- Offset pivot guide (1)
- Actuator unit (2)
- Rollers (3)

The following are also required for operation:

- Signal amplifier (4)
- Sensors (5)
- Fixed rollers (6)

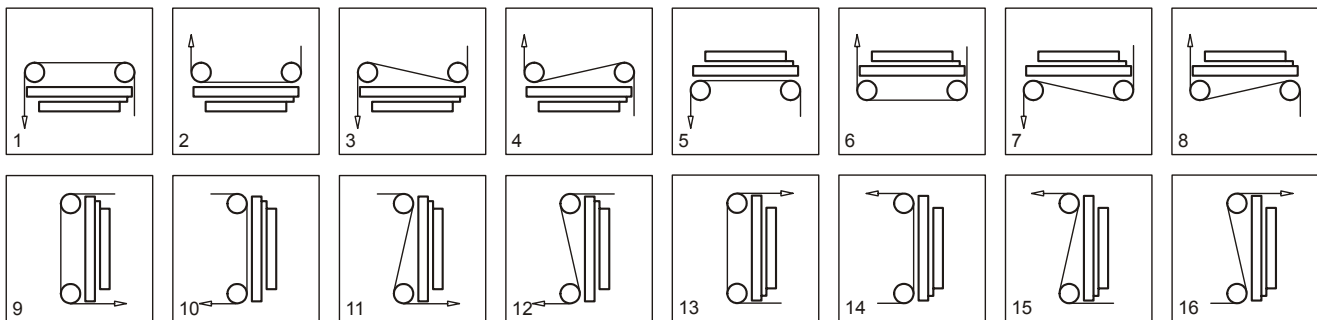


SPECIFICATIONS FIFE SYMAT 70B



F = Face length	250 - 700 mm	J = Correction	±20 - ±45 mm
D = Roller diameter	50/75/100 mm	T = Tension	max. 800 N
L = Guide span	250 - 600 mm	V = Correction speed	max. 50 mm/s
		Weight	18 - 44 kg

WRAP STYLES



Fife-Tidland GmbH
 Fifestraße 1
 65779 Kelkheim, Deutschland
 Siemensstraße 13-15
 48683 Ahaus, Deutschland
 Phone: +49-6195-7002-0
 Fax: +49-6195-7002-933
 E-Mail: info@maxcess.de
<http://www.maxcess.de>

Fife-Tidland (UK) Ltd.
 70-72 Manchester Road
 Denton/Manchester M34 3PR
 Great Britain
 Phone: +44-161-320-2000
 Fax: +44-161-320-4513
 E-Mail: sales_uk@maxcess.de
<http://www.maxcess.de>

Fife Corporation
 Post Office Box 26508
 Oklahoma City, OK 73126, USA
 Phone: +1-405-755-1600
 Toll-Free: +1-800-639-3433
 Fax: +1-405-755-8425
 E-Mail: fife@fife.com
<http://www.fife.com>

COMPANIES OF **MAXCESS**
 INTERNATIONAL

